

Patchwork Holiday Tree Skirt

Machine and / or Hand Sewing Pattern, Decorative Embellishment
finished skirt approx. 48" diameter (adjustable)
skirt panel template & visual reference on following pages

Create your own patchwork tree skirt from scraps, selvedge strips, or even your stash. This pattern will take you through each step and is perfect for beginners & seasoned sewists alike.

Fabric Requirements & Supplies

- [1] approx. 1½–2 yards fabric scraps or selvedge strips— enough to make [8] approx. 23" x 20" panels
- [1] approx. 1½–2 yards backing fabric— for building scrap wedges
- [1] approx. 1½–2 yards backing fabric and/or thin batting— optional; scrap batting works well
- [1] approx. 15' bias binding tape or ribbon— for edging & closure
- [1] paper for template drafting or printing provided template
- [1] ruler, compass or string & pencil, scissors, pins, and sewing machine or hand sewing needle

Print & Assemble Panel Template

- [1] Print all six [6] panel templates.

NOTE: when printing, be sure the printer is set to "actual size", "100%", or scaling "none". Double check against the 1" test square.

- [2] Cut at the outermost, blue dotted lines marked "cut line".
- [3] Lay out pieces as you go by the numbered key. The outline of the wedge is indicated in blue; solid grey square indicates the current template piece / page.
- [4] Tape at adjoining edges *inside* of the wedge & trim excess paper to the black dashed line (marked ½" seam allowance).

OPTIONAL: draft the template on paper. On large paper using a compass or pencil & string, draw a circle with a 24" radius for a 48" skirt. Add a 3" radius circle at the center for the trunk opening. Divide the large circle into 8 equal wedges— one division each 45°. For one wedge, mark a ½" seam allowance to the outside of all sides & trim.

Create the Patchwork Panels

NOTE: repeat to make eight (8) wedge panels

- [1] Cut your selvedge strips or fabric scraps if they are larger pieces— ideally 1" – 2" strips.
- [2] Using the panel template— mark & cut eight (8) wedges of your backing fabric to use as a base.
- [3] Starting at the small side of the backing fabric wedge base— attach strips to the base with right sides up using, a "quilt-as-you-go", raw edge method:
 - place the first strip right side up extending approx. ¼" past edges (½" seam allowance)
 - lay the next strip down on top of the first, parallel & right side up with at least ¼" overlap
 - sew inside overlapping edge with a ⅛" – scant ¼" seam
 - continue adding & sewing strips until backing fabric wedge base is fully covered
- [4] Using the panel template, trim the finished wedge to the ½" seam allowance for ease of assembly.
- [5] Repeat steps 3 & 4 to assemble all eight (8) wedge panels.

Assemble the Skirt

- [1] With right sides together, sew the eight (8) wedges together along the long edges.
 - use a ½" seam allowance
 - press seams open or to one side
- [2] Leave one seam open from the outer edge to the inner circle— for wrapping around the tree.

Add Backing and/or Batting— optional

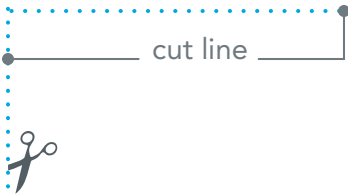
- [1] Lay your backing fabric right side down.
- [2] If using batting, place next, then your tree skirt right side up on top.
- [3] Pin or baste layers together.
- [4] Cut the backing & batting (if using) to match the skirt shape.
- [5] Sew around the outer edge & inner circle.
- [6] Quilt as (or if) desired

Finish Edges & Closure

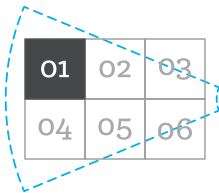
- [1] Bind the outer edge, inner circle, & open edges with bias tape.
- [2] Add ribbon ties or Velcro along the open edge for closure— optional.

Tips & Tricks

- Alternate fabric colors for a two-tone pinwheel effect.
- Add decorative quilting or embroidery.
- Use glitter fabric, velvet, or ruffles for a festive touch— find a thread weight in your Advent Calendar that you've never used before and have some fun experimenting with something new!



1/2" seam allowance



Il Borgo Patchwork Holiday Tree skirt Template pg01
©2025 Aurifi | Il Borgo Advent Calendar
Prints / Copies Permitted for Personal Use Only

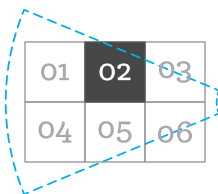


ensure printer is set to—
"100% scale", "actual size",
or scaling "none"

cut line



1/2" seam allowance

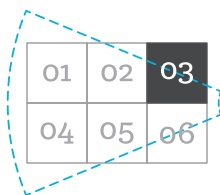


Il Borgo Patchwork Holiday Tree skirt Template pg02
©2025 Aurifi | Il Borgo Advent Calendar
Prints / Copies Permitted for Personal Use Only



ensure printer is set to—
"100% scale", "actual size",
or scaling "none"

cut line

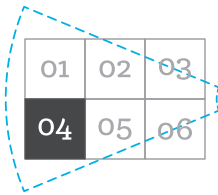


Il Borgo Patchwork Holiday Tree skirt Template pg03
©2025 Aurifi | Il Borgo Advent Calendar
Prints / Copies Permitted for Personal Use Only

1" TEST
SQUARE

*ensure printer is set to—
"100% scale", "actual size",
or scaling "none"*

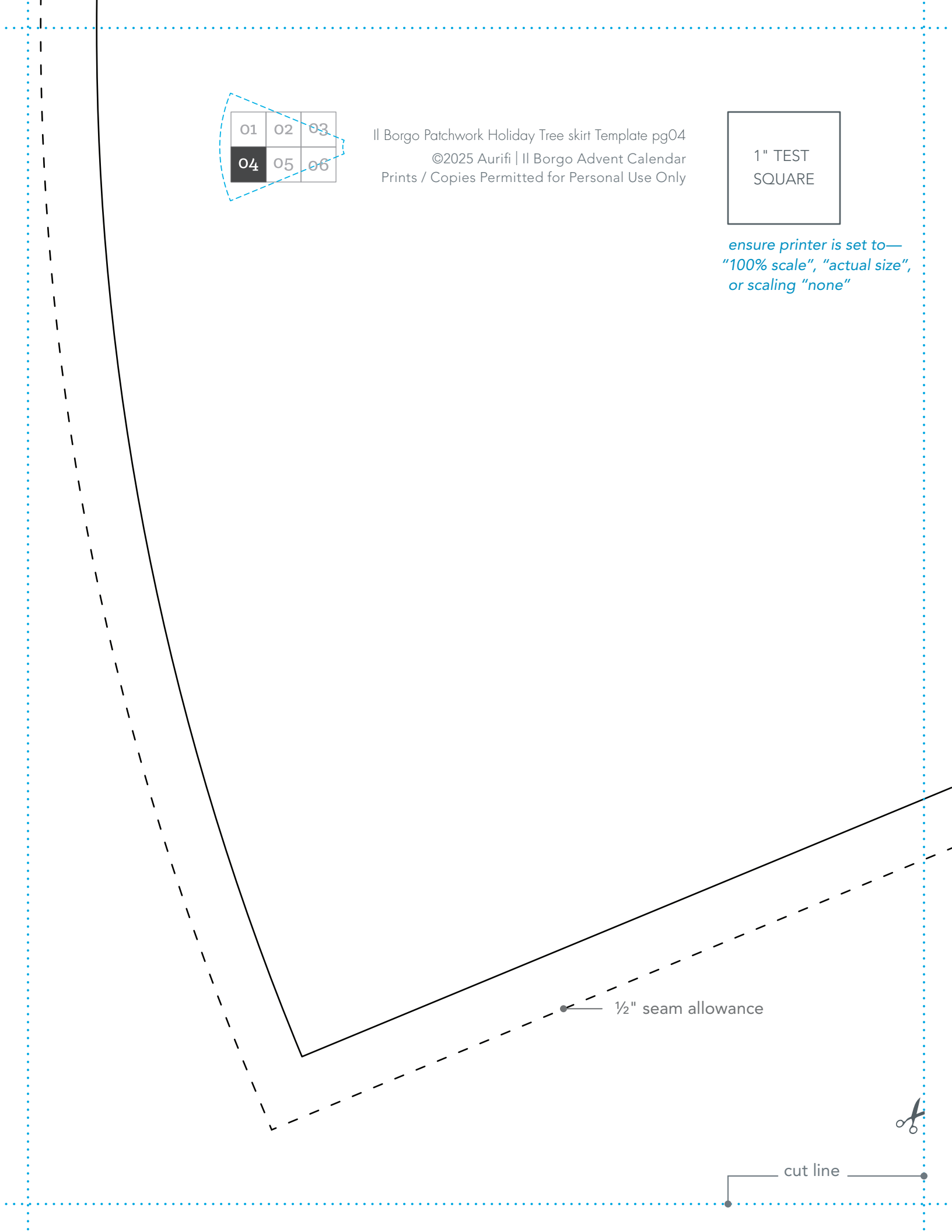
$\frac{1}{2}$ " seam allowance



Il Borgo Patchwork Holiday Tree skirt Template pg04
©2025 Aurifi | Il Borgo Advent Calendar
Prints / Copies Permitted for Personal Use Only



*ensure printer is set to—
"100% scale", "actual size",
or scaling "none"*

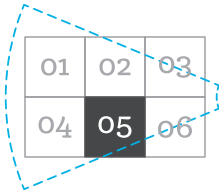


cut line

cut line



$\frac{1}{2}$ " seam allowance



Il Borgo Patchwork Holiday Tree skirt Template pg05
©2025 Aurifi | Il Borgo Advent Calendar
Prints / Copies Permitted for Personal Use Only

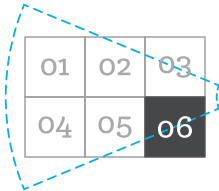


ensure printer is set to—
"100% scale", "actual size",
or scaling "none"

cut line



1/2" seam allowance



Il Borgo Patchwork Holiday Tree skirt Template pg06
©2025 Aurifi | Il Borgo Advent Calendar
Prints / Copies Permitted for Personal Use Only



ensure printer is set to—
"100% scale", "actual size",
or scaling "none"

